

## Sales & Display Homes

Oran Park Town—Oran Park  
 phone: 9043 5786  
 Mbl: 0411178106

H/O phone: 02 4655 9977  
 www.nuerahomes.com.au  
 Lic No 92212C

# House and Land construction Package Tahmoor



Modern Designs, Per-

## YORK

### INCLUSIONS

#### Site Costs (up to 1m fall over lot)

- Solid Concrete Slab (NOT polystyrene foam 'waffle pod')
- 'H' up to 'P' Class slab classification (32mpa concrete)
- Piering allowance up to 95 lineal metres
- Basix including 5,000 litre rainwater tank
- Workcover requirements (security fence & scaffolding)
- Wall & Ceiling Insulation (3.5 to living & 1.5 to walls)




#### Standard

- Gas Package (Instantaneous Gas HWS & heat point)
- Stainless Steel appliances
- Dishwasher provision
- Panel Carved Doors throughout (incl robes)
- Double power points throughout
- China Toilet Suites & Polyurethane vanity units
- 1.2m high tiling to bathrooms (not skirting tile)
- Optional Colourbond roof with sarking

#### Package

- Carpet to Bedrooms or as shown on plan
- Timber laminate floating floor to balance of home
- Tiled front porch and alfresco
- Stencilled driveway to front boundary (5.5m setback)
- Concrete driveway crossover (up to 3.5m to rolled edge kerb)

### This Home

Ground Floor:	139.74		4
Garage:	34.32		2
Patio:	2.70		2
Outdoor Living:	9.22		
TOTAL	185.98		

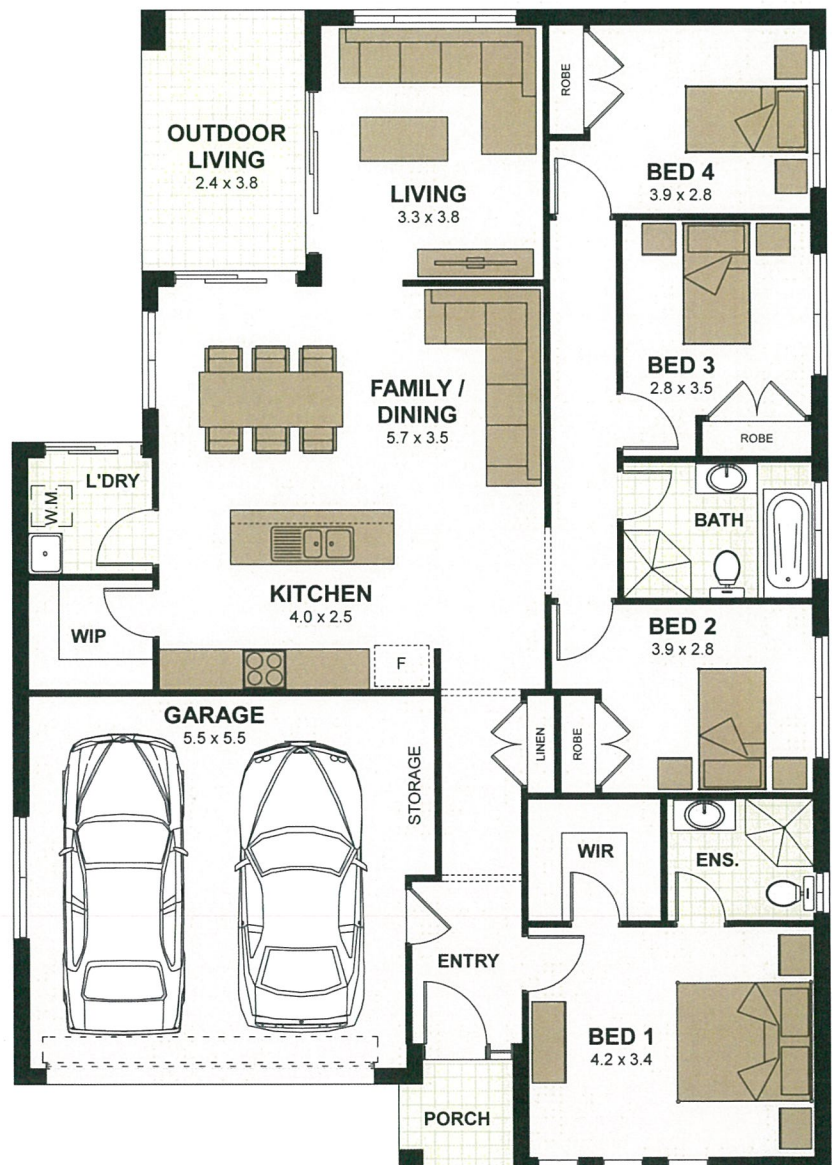
Land 703.9 Sqm

\* SUBJECT TO TENDER BY NU-ERA HOMES

Lot 25 90 Thirlmere way Tahmoor 25m x 28.2m

### Sales Contacts

## \$650'500



**Metropolitan, Blue Mountains  
 Southern Highlands to Goulburn  
 & South Coast**

Ritchard Laycock - mob: 0411 178 106

Home design ©2013 Nu-Era Homes Pty Limited. Illustrations and images are indicative only. Nu-Era reserves all rights to adjust both design and specifications without notice or obligation. Price is for Standard Inclusions and includes Site Costs on level block. Subject to Land Registration. Please contact the Nu-Era Sales Office for full details. Released: V 101.11.13